

PART OF S.E. 1/4, SEC. 29, T.7N., R.1W., S.L.B & M.

35

NORTH OGDEN BLOCK 36, PLAT A

IN NORTH OGDEN CITY
SCALE 1" = 50'

PREFIX:18-035

TAXING UNIT:10

SEE PAGE 52

2850 NORTH STREET

MT. #16

MT. #15

515.0
EAST

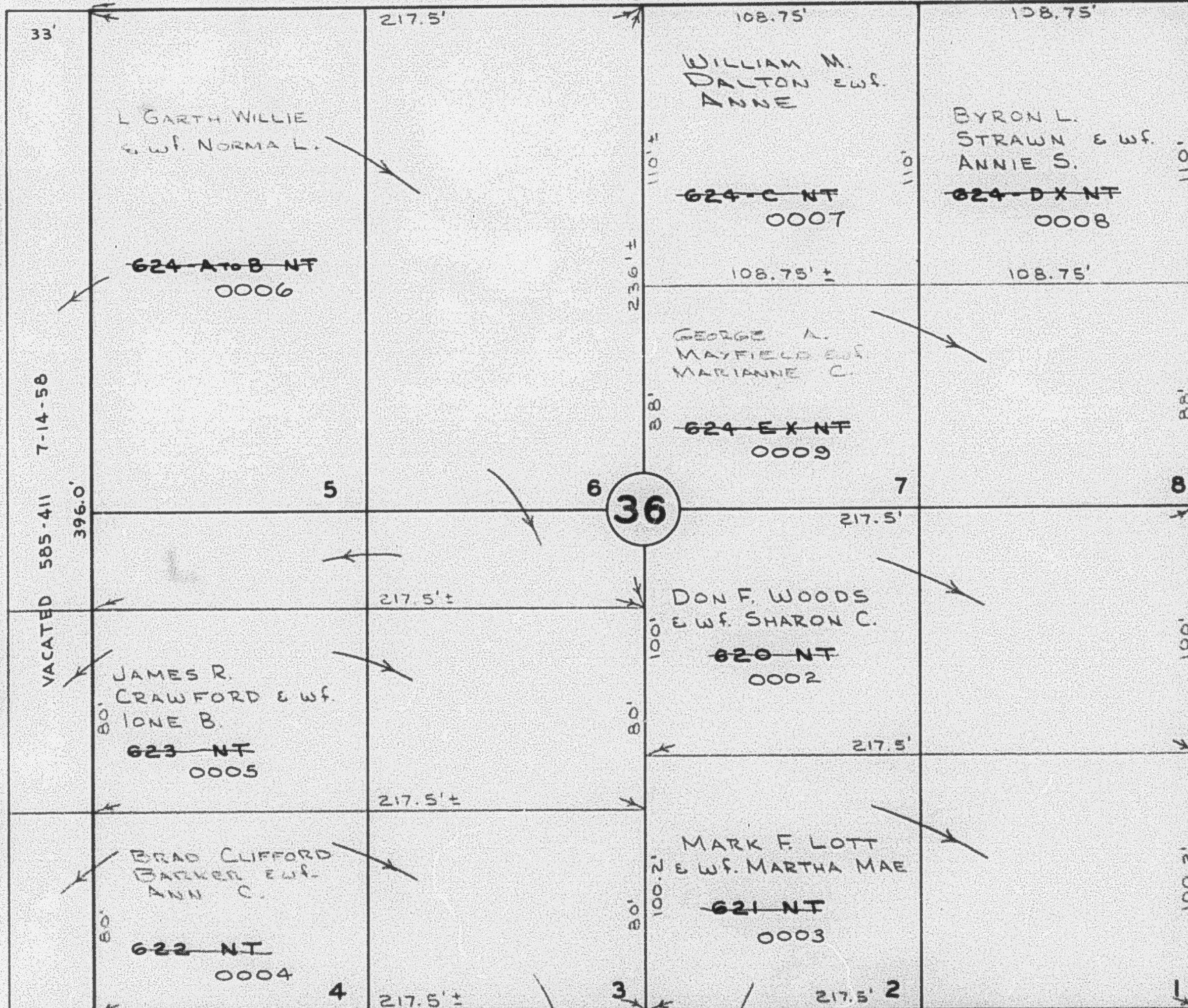
MT. #46

S 89°45'E

SEE PAGE 53

AVENUE

STREET



STREET

STREET

450 EAST

450 EAST

SEE PAGE 36

SEE PAGE 54

WASHINGTON

400 EAST

2800 NORTH STREET

VACATED (903-28) 10-28-68

435.0'

SEE PAGE 34

(NE COR. OF BLOCK 35)